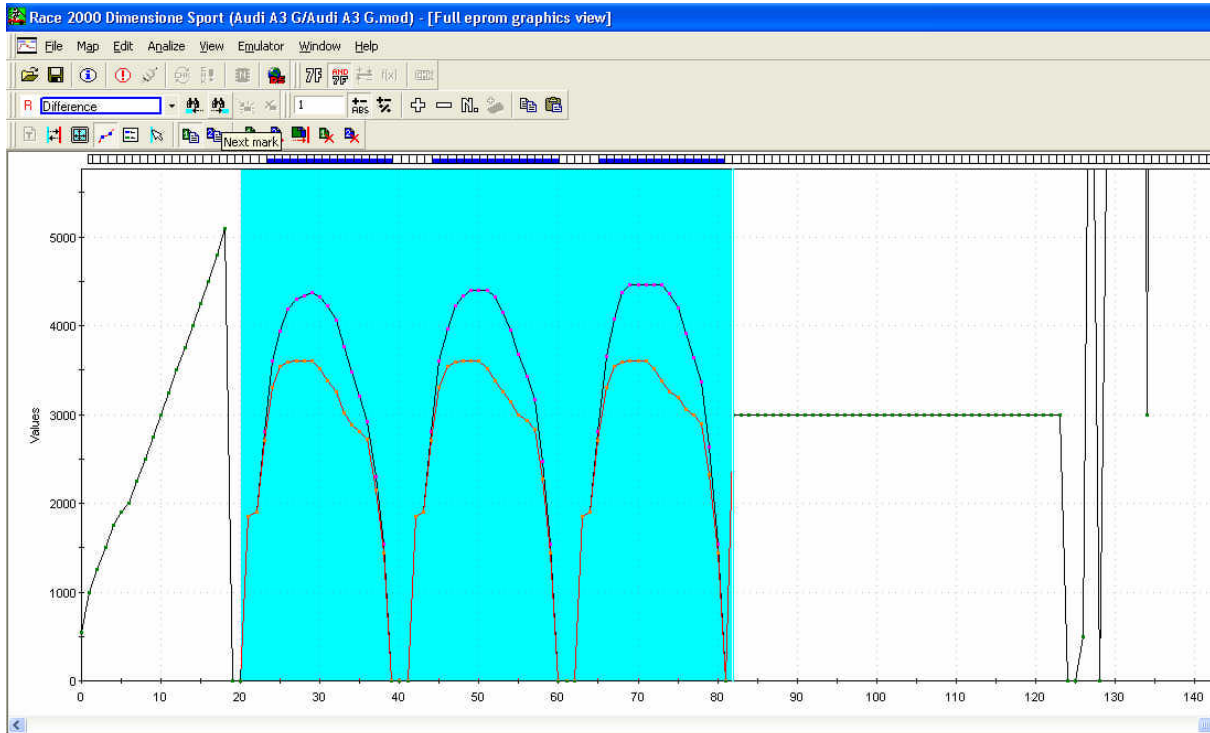


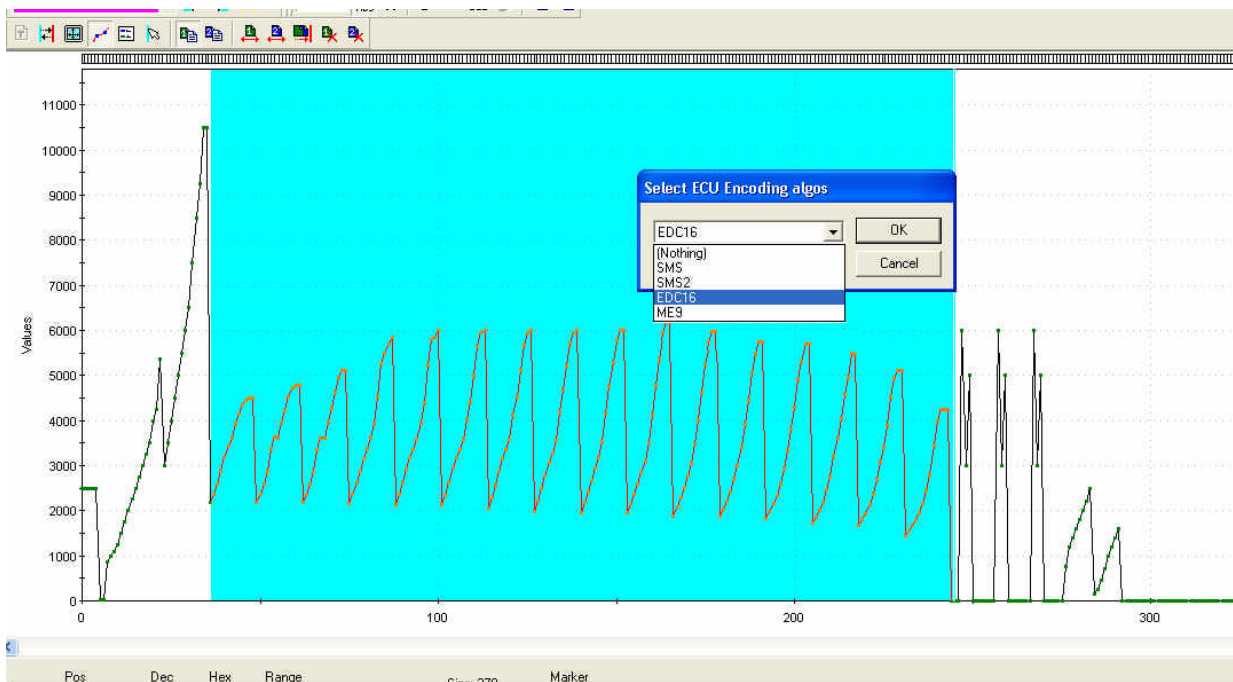
RACE BASIC: DEVELOPMENT SYSTEM! A CHALLENGE FOR YOUR TECHNICAL SKILLS ...

If you aim to be free to search the maps by yourself or if you already use a graphic program and you are experienced in map searching but you wish to have powerful software in your hands with huge opportunities, **RACE BASIC** is the version suitable for you.

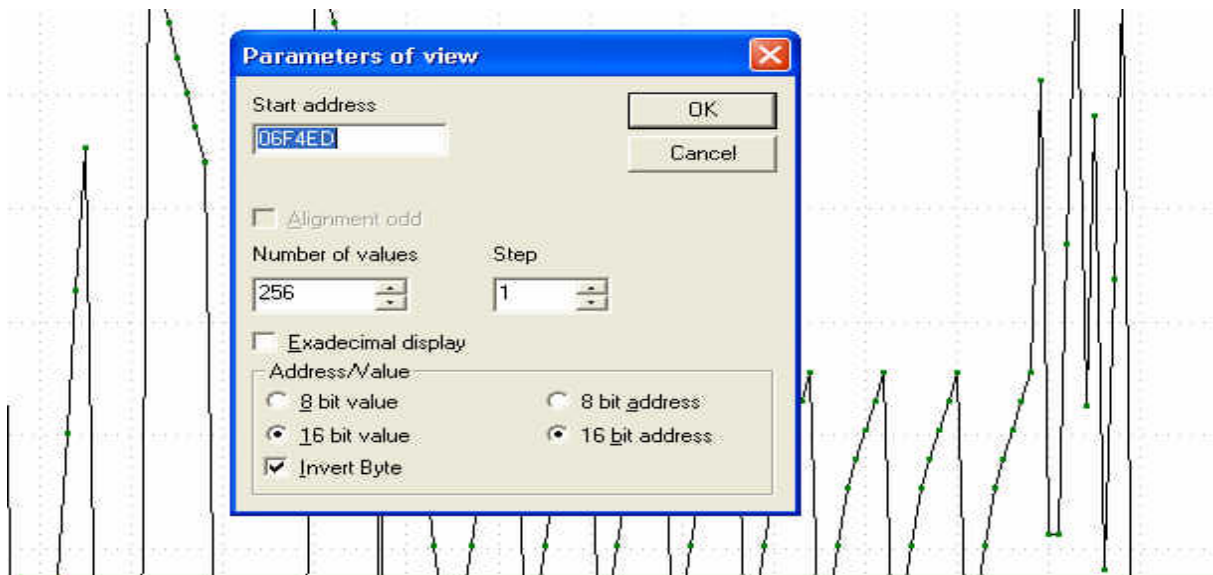
This version enables the research of map locations, with a wide range of options. As example, as RACE has been created with two RAM memories, the tuner can load one original file in RAM1 and a modified file of an analogous ECU system in RAM2 to find the difference parameter sets.



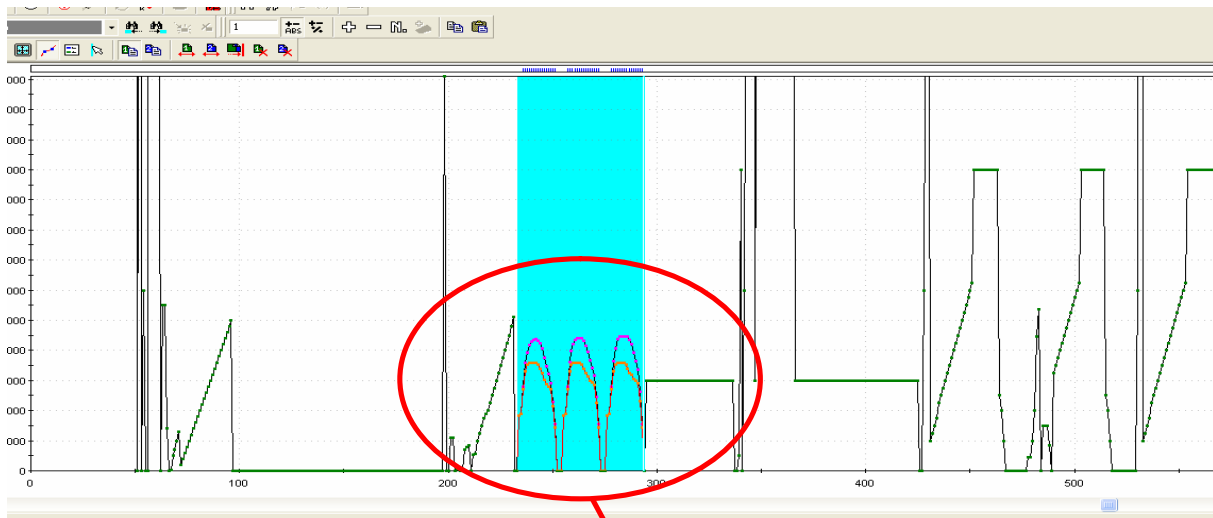
RACE BASIC enables the possibility to unscramble ECUs encoding algorithms: the tuner selects the ECU (example BOSCH EDC16 or ME9, etc.) to have the complete content of the eeprom file "in clear".



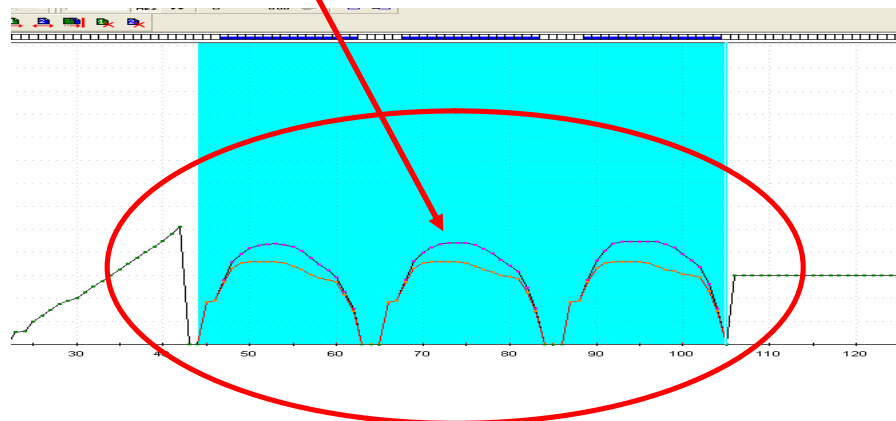
RACE BASIC has been developed to allow map searches in the most professional way. It enables the user to identify the working engine parameters without technical support. The tuner can **find by himself** the different map areas, revs/speed limiters, checksum areas, etc.. The eeprom file is shown in decimal or hexadecimal numbers, 2-D and/or 3-D chart. This version of **RACE** requires advanced skills as well as experience in map location and tuning.

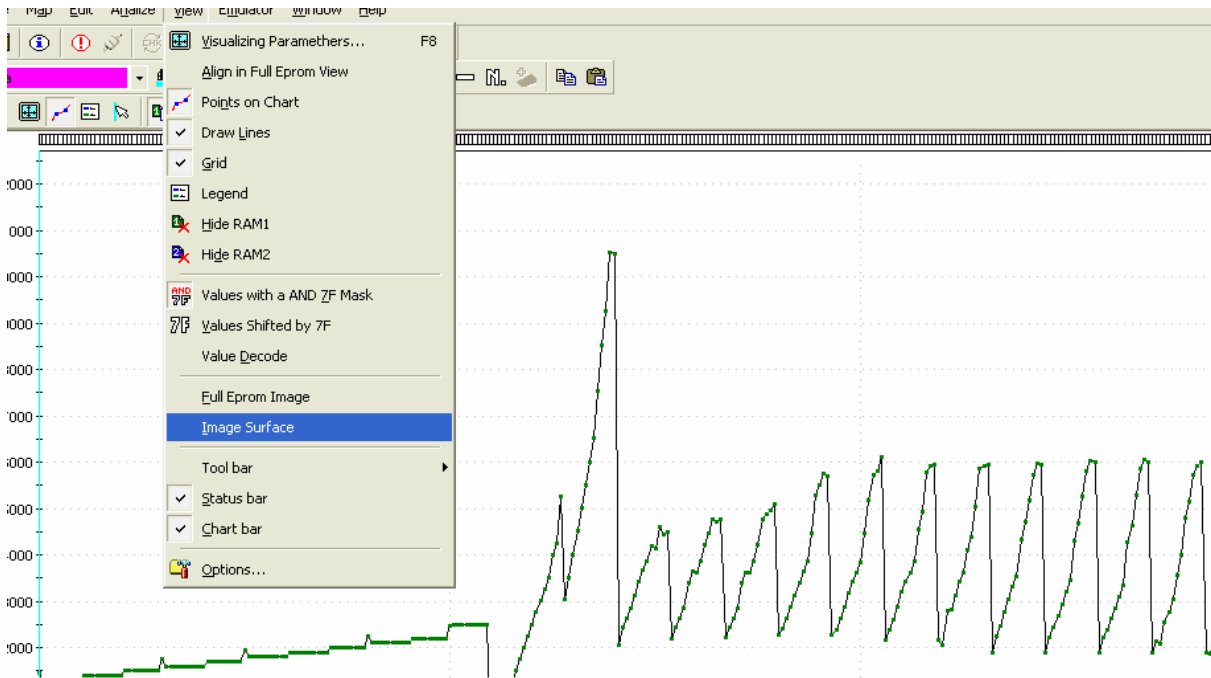


RACE BASIC offers useful tools such as markers for significant values searching, etc.. It allows the visualization of the map in 8 or 16 bit format (8/16 bit addresses and values) with the possibility of inversion between MSB and LSB, even or odd alignment, printing of the pre-selected areas, etc.. The tuner can select the start address, number of rows and columns so as to have an area identified as map visualized in the correct way.

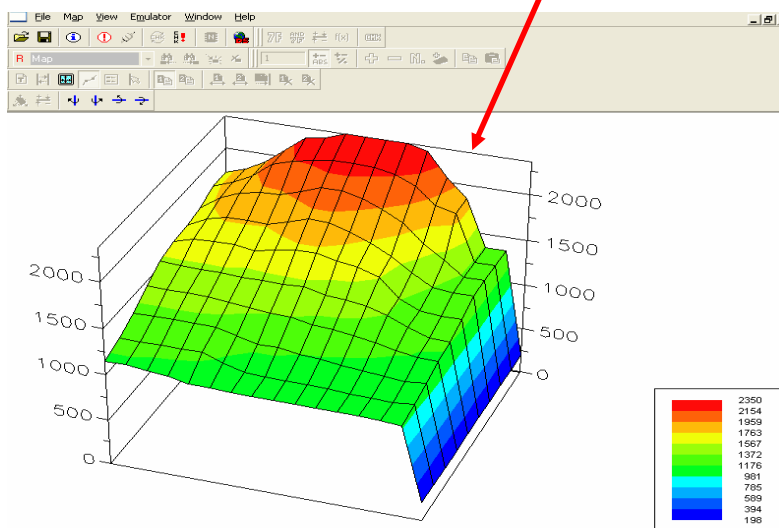
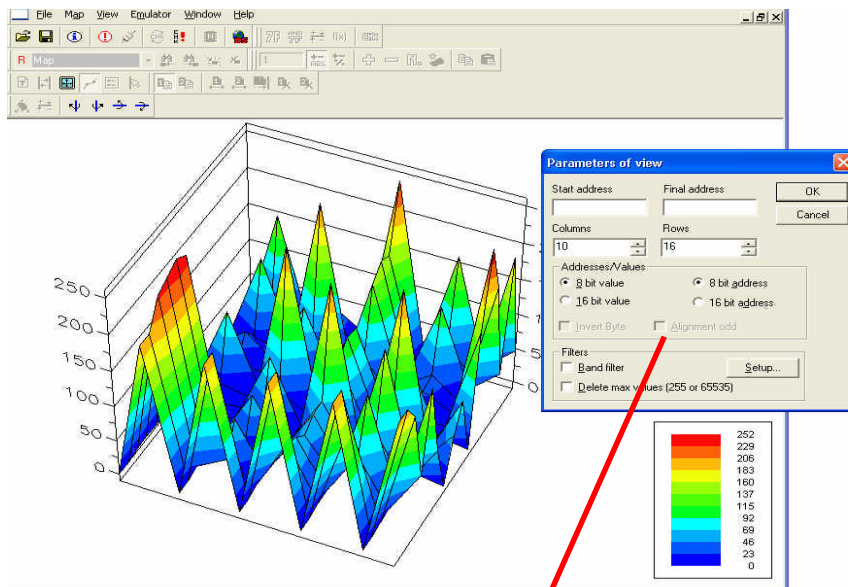


After having selected an area, for example, it is possible to expand the image in order to better visualize the parameters: useful method to analyze an area and study possible maps in detail!





The content of the eeprom file can be visualized also in a 3D chart: "Image Surface" is the helpful function permitting to see how a specific area has been created (all the maps are created with a 3D system).

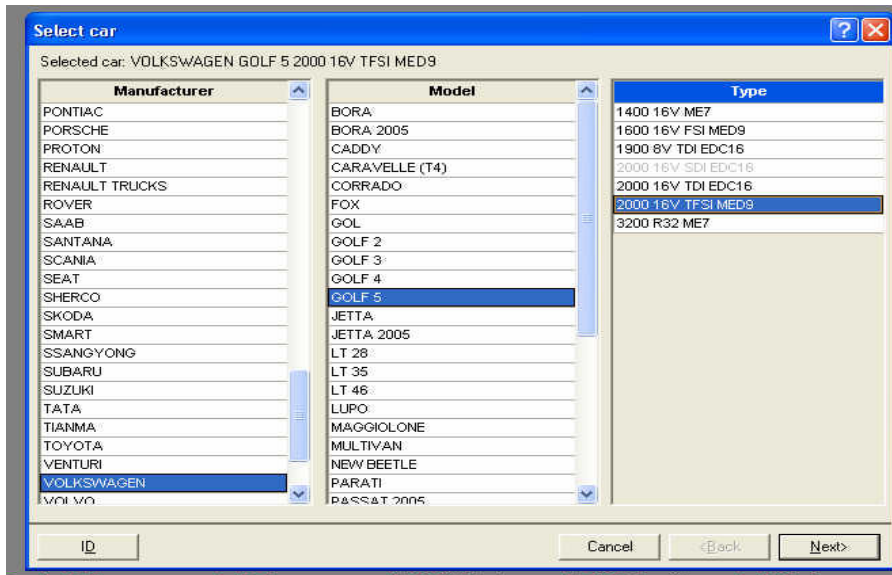


After setting the parameters of view (number of columns and rows, starting & final addresses), the tuner can study the map area as created by the manufacturer. Here you can check the different visualization **BEFORE** and **AFTER** having set the parameters of view.

As already pointed out, with **RACE BASIC** the tuner is not supported with technical information about the addresses of the map location, filters required, etc. These information are available through the setting files.

RACE BASIC allows the tuner easy intervention via OBDII as well: the original file can be read and programmed with FLASH serial system.

The tuner can choose if starting the operations with the reading of the original parameters (then create a mod file and download it via OBDII after having the file been verified by **RACE**) or if download an existing mod file. In this last case, only the eeprom size would be verified before the transmission of the file into the ECU.



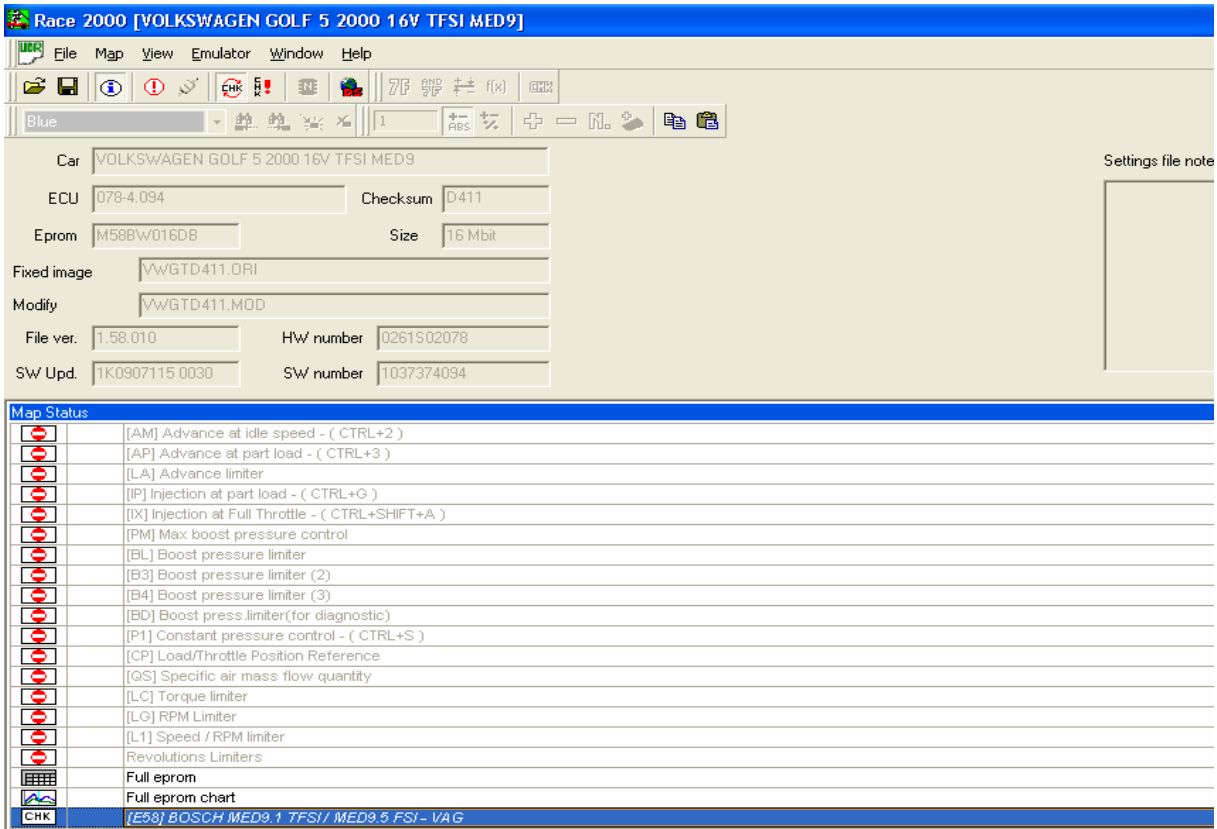
RACE BASIC offers the possibility to organize your archive of original and modified files: the tuner can store these archives according to MANUFACTURER MODEL ENGINE TYPE.

This option permits to organize fast and logic searches, avoiding useless and annoying waste of time consequent to an eventual untidy organization of your records.

RACE BASIC, by using specific files called "**BASIC CONFIGURATION FILES**", allows to restore the checksum recalculation after the modification. They are software interfaces showing the complete content of the eeprom file in graphic ("**Full eeprom chart**") and numeric mode ("**Full eeprom**"). **BASIC CONFIGURATION FILES** enable the following operations:

- Checksum recalculation after every modification realized on the full eeprom file;
- Serial reading and programming operations with controls on congruence of the file to download, size, checksum parameters.

BASIC CONFIGURATION FILES also show in grey (not active) the list of maps available in the **SETTING FILES (RACE STANDARD and RACE PLUS)** for the same vehicle.



This version of **RACE** is particularly indicated in association with **FLASH SERIAL PROGRAMMING** and **555 PRO** (BDM tool provided by Dimsport).

IMPORTANT:

Please note that, without **BASIC CONFIGURATION FILES**, this version of the program allows the tuner to upload/download it via OBDII as a "serial shooter": no controls about the congruence of the file are realized, just the size of the file is checked (always verified).