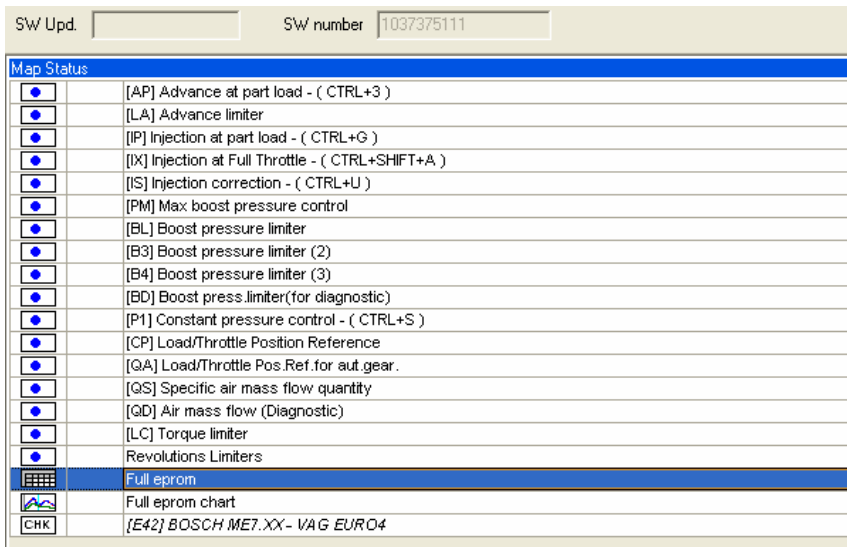


# RACE PLUS: RACE STANDARD+RACE BASIC+EXTRA FEATURES THE GREATEST TECHNICAL EXPLOITATION...!

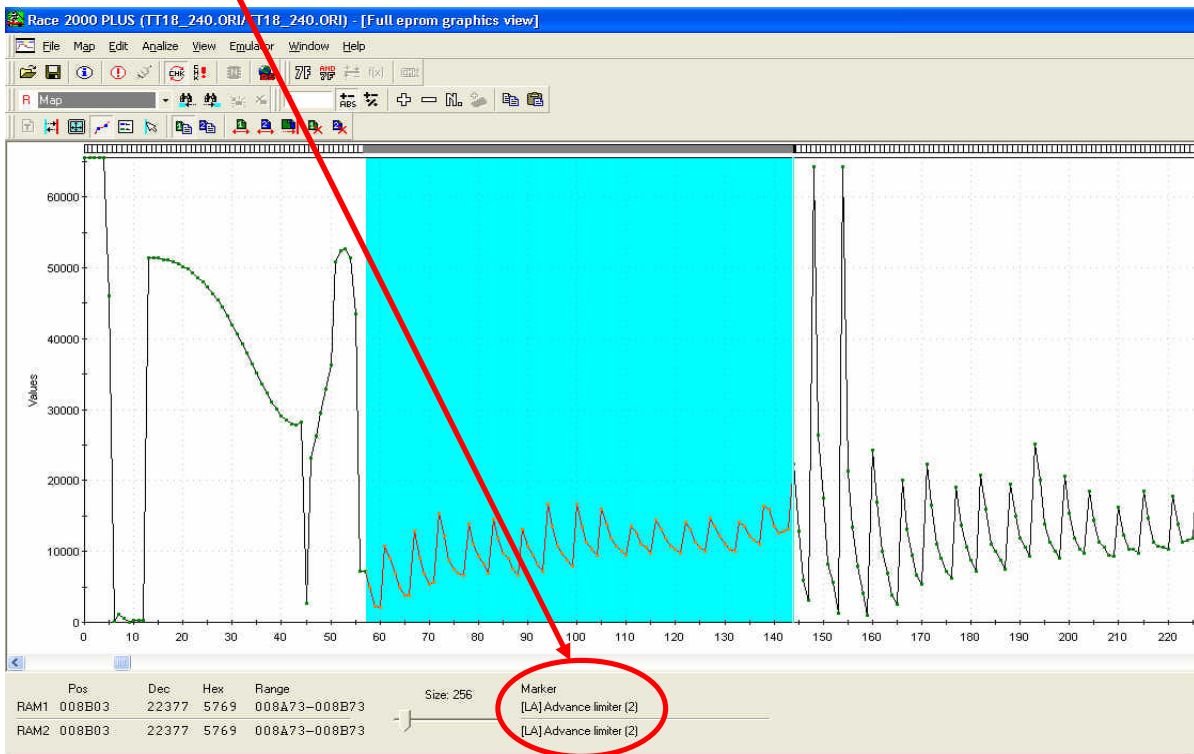
**RACE PLUS** joins the highest reliability and ease in recalibration performance tuning assured by **RACE STANDARD** and the hugest opportunities of independent technical developments of **RACE BASIC**.

Furthermore, the combination of the two versions of **RACE** previously examined enables some additional technical features. In this case, we could say that 1 + 1 = 3!



When a setting file for car is loaded into **RACE PLUS**, the tuner is allowed to open in an only screen the list of maps available for **RACE STANDARD** and the complete eprom file (both graphic and numeric mode) granted by **RACE BASIC**.  
But... in order to offer a more powerful tool for car tuning, an advanced further technical attribute for map location has been added...

The tuner has the possibility – granted by **RACE PLUS** only – **to see and clearly recognize, in car full eprom file, the location of the maps identified through the setting file, inclusive of the SPECIFIC NAME of the map!**



The tuner, after loading a car setting file, is enabled to read the name of the maps as indicated in the picture here. To see the next maps, it will be enough to push the button "find next".

**RACE PLUS** allows high level car tuning intervention starting from the information supplied by **DIMSPORT**: we offer our experience at your full service for real custom tuning.